

GENERAL NOTES:

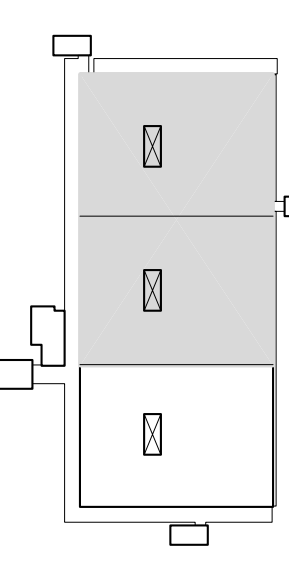
GENERAL NOTES:

**Glickhorn Lazzarotto Partners**  
 645 HARRISON ST  
 SUITE 101  
 SAN FRANCISCO  
 CA 94107  
 415 512 7796  
 415 512 7798  
 GLSP.com

CONSULTANTS:  
**MECHANICAL/ELECTRICAL/  
 PLUMBING ENGINEER**  
 GANER ENGINEERS  
 1133 POST STREET  
 SAN FRANCISCO, CA 94109  
 SAN FRANCISCO, CA 94109  
 FAX: 415.474.1353

NUMBERED SHEET NOTES:

KEY PLAN:



FIRE MARSHAL:

DSA:



**University of California**  
 Physical Planning and Construction  
 Santa Cruz Campus  
 Santa Cruz, California  
**Baskin Alterations - Labs 206, 207  
 & 208 Final User Build-out**  
 Baskin Engineering Building  
 1156 High Street  
 Santa Cruz, CA 95064  
 USGC PROJECT & FILE NO: 2700-111  
 ISSUE DATE

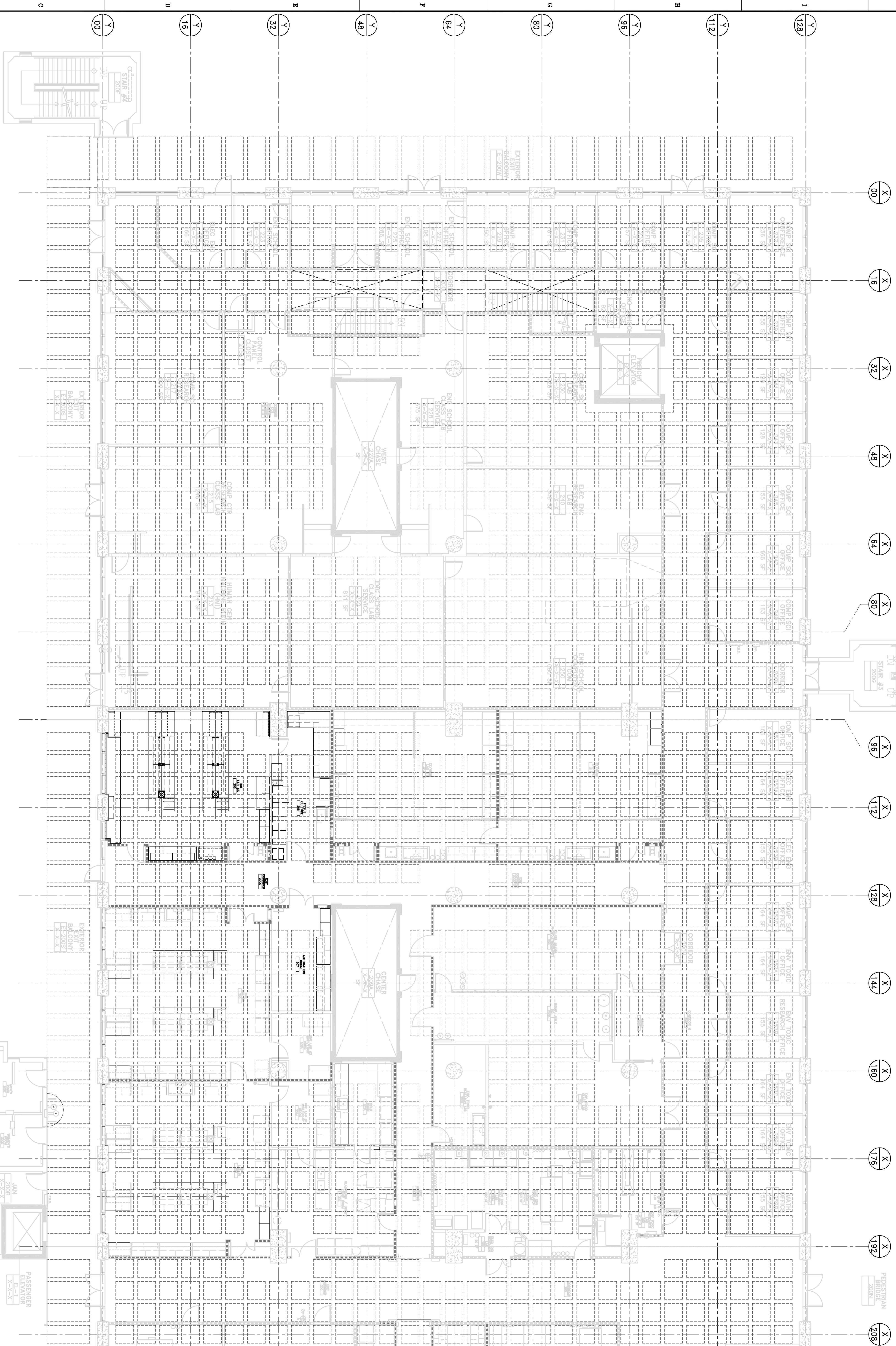
NO.	DATE	REVISIONS DESCRIPTION

10/03/07 ISSUED FOR FINAL REVIEW  
 PROJECT NO: 0723  
 CAD DWG FILE: A-FP102-DWG/GD011.BWG  
 DRAWN BY: FA/CH/ZK  
 CHECKED BY: MHG  
 SHEET TITLE

**SECOND FLOOR PLAN  
 NEW CONDITION  
 (WEST SIDE) / WALL COORDINATION  
 WAFFLE SLAB/ WALL COORDINATION**

**A-102.1X**  
 OF

SHEET



SECOND FLOOR - WAFFLE SLAB COORDINATION SHEET (FOR REFERENCE ONLY)  
 1/8"=1'-0"

A-09102-1.DWG  
 1